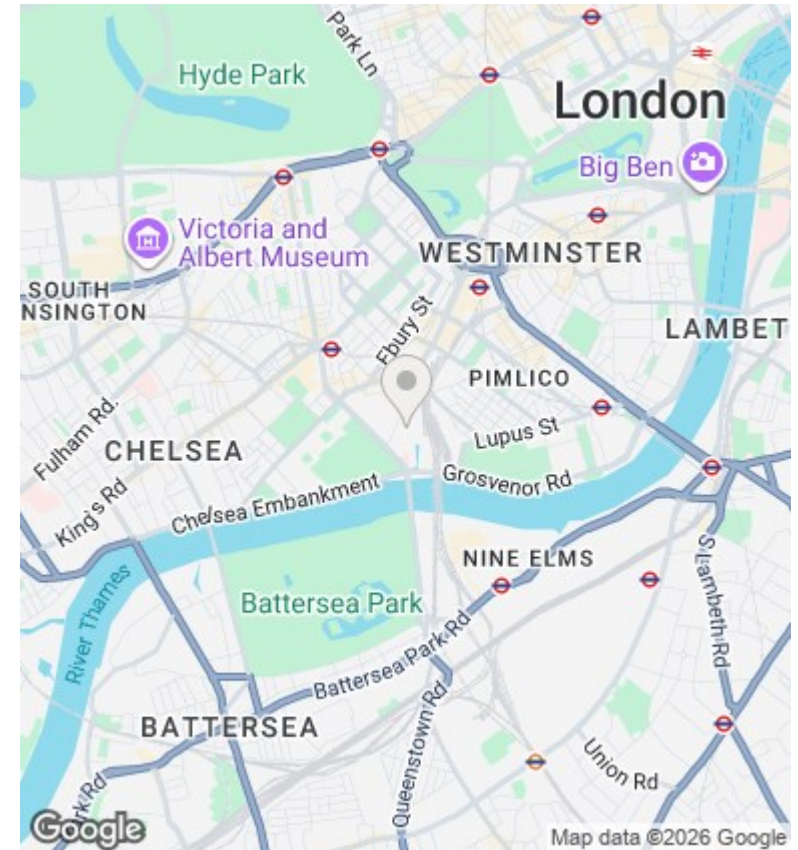
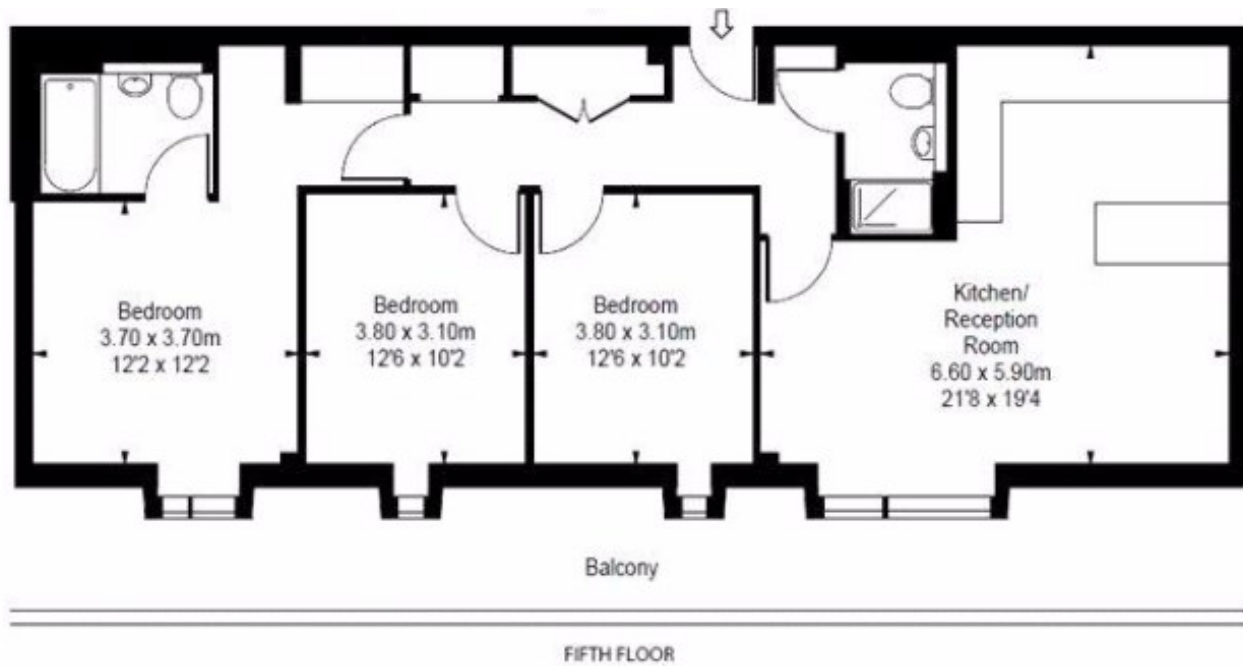




Moore House , Grosvenor Waterside , Gatliff Road SW1W 8DU

£1,650,000

- 24H CONCIERGE
- ALLOCATED PARKING SPACE
- MOMENTS AWAY FROM SLOANE SQUARE , KINGS ROAD AND VICTORIA
- VIDEO VIEWING AVAILABLE
- 3 BEDROOMS 2 BATHROOMS
- GYM AND SPA
- WEST FACING TERRACE
- AIR COOLING AND UNDER FLOOR HEATING
- SELF MANAGED DEVELOPMENT



Viewings

Viewings by arrangement only.
Call 02077225022 to make an appointment.

Council Tax Band

G

EPC Rating:

Energy Efficiency Rating		
	Current	Potential
<i>Very energy efficient - lower running costs</i>		
(92 plus) A		
(81-91) B		
(69-80) C		
(55-68) D		
(39-54) E		
(21-38) F		
(1-20) G		
<i>Not energy efficient - higher running costs</i>		
England & Wales	EU Directive 2002/91/EC	